

A CASE STUDY

SEMPRA & TURNER CONSTRUCTION

Sempra was looking for a wall solution that provided acoustical privacy in their downtown 16 floor tower. bkm installed two floors at a time in an 8 day schedule (approx. 2,000 linear ft. of VIA Wall in 8 days). bkm and Steelcase worked with Turner, the third largest construction company in the world. Earning Turner’s trust and keeping their trust were very important to bkm. The easiest way bkm kept Turner’s trust was by meeting their timelines.

SPEC’S

17,000 Employees
16 Story Building

SERVICES PROVIDED

11 Floors of VIA Wall Product

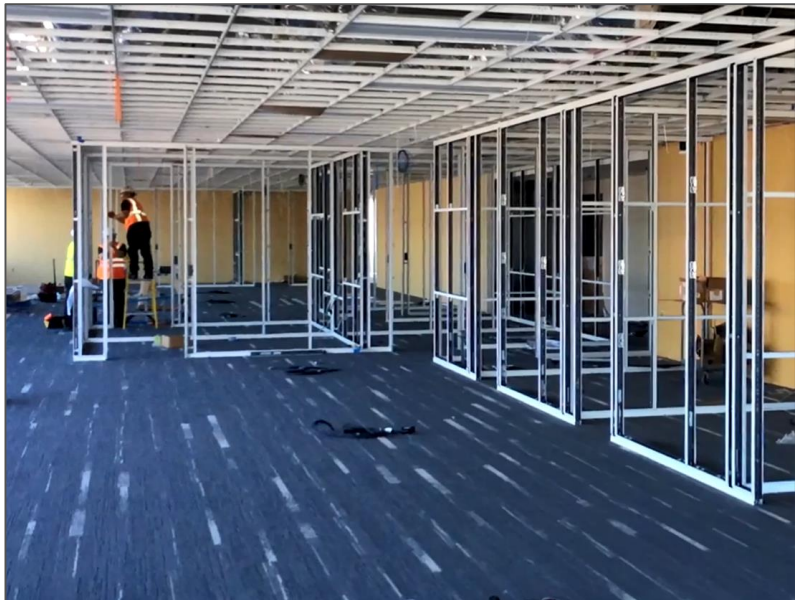
PARTNERS

Turner Construction
Steelcase
bkm



Click Play Button to view the video case study by Steelcase & bkm

“The overall feeling post project is: we succeeded. We ended up having a client with a project that is very happy with their product and a GC that is looking forward to working with us in the future.”
– Travis Kennedy, bkm Project Manager



BEFORE



AFTER